



Name: _____

Date: _____

WASHAKIE MUSEUM & CULTURAL CENTER

4th—5th Grade Scavenger Hunt

These questions follow the basic layout of the museum, but to help if you get lost, the questions are divided by room and display area.

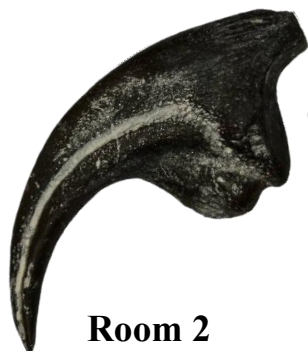
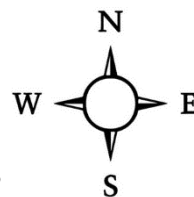
The Ancient Basin

Room 1

Identify one of the “Tools of the Trade” and describe its use.

What River runs through town? _____

Circle which Direction it flows. →



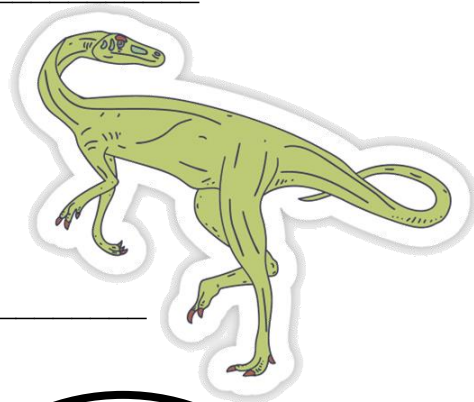
Can you find the Allosaurus Claw in the Pull-out Drawers?

How old is it? _____

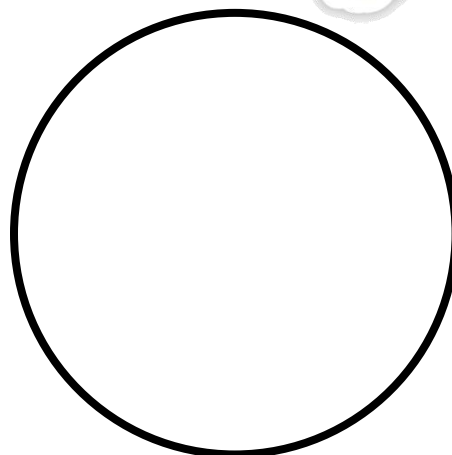
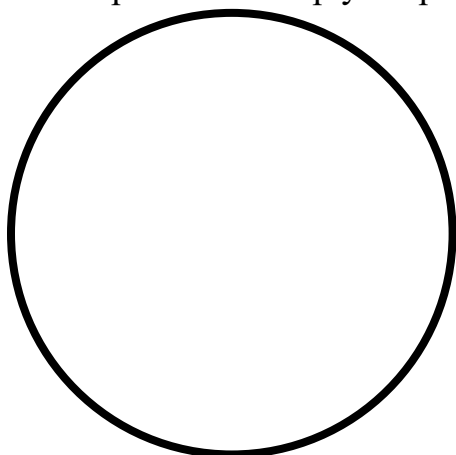
Room 2

Left, Left, Left-Right-Left... Find the Dinosaur Footprints.

What kind of dinosaur do you think made these prints?



Find the fossil plants? Stamp your plant impressions here:

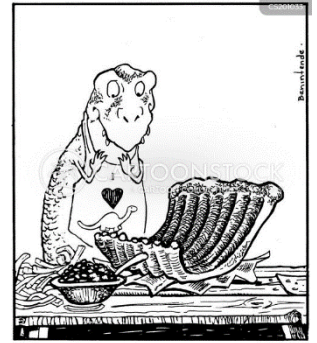


How old are these fossils? _____

Do you like to eat BBQ ribs? _____

Find the big dinosaur Rib Cage.

What dinosaur do these ribs belong to? _____



← Can you find an animal that looks like this?

Was it an Herbivore (plant eater) or Carnivore (meat eater)?

Check out the Mammoth Puzzle in the next room, can you put it all together? _____

Room 3

Projectile points are anything like spear heads, arrow heads or the like. How many Projectile points can you find in this room of the museum? _____



List the three large animals that were major food sources for the people of the Big Horn Basin.

1. _____
2. _____
3. _____

Use the space below to draw some of your favorite petroglyphs from the light up wall display

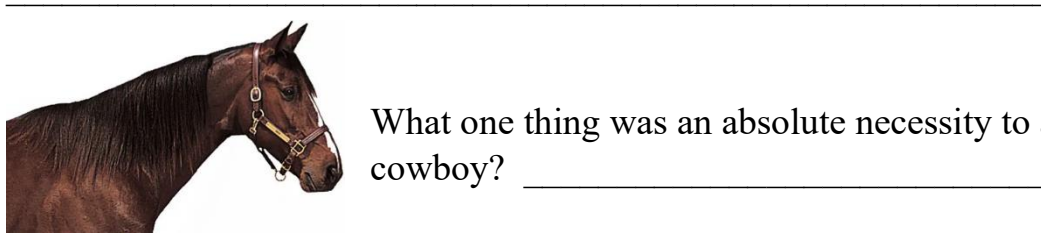


What type of large wooden dwelling do we have on display in this part of the museum?

The Last West



Watch the video at the beginning of this area. Which cattle did the cowboy want separated from the rest of the heard?

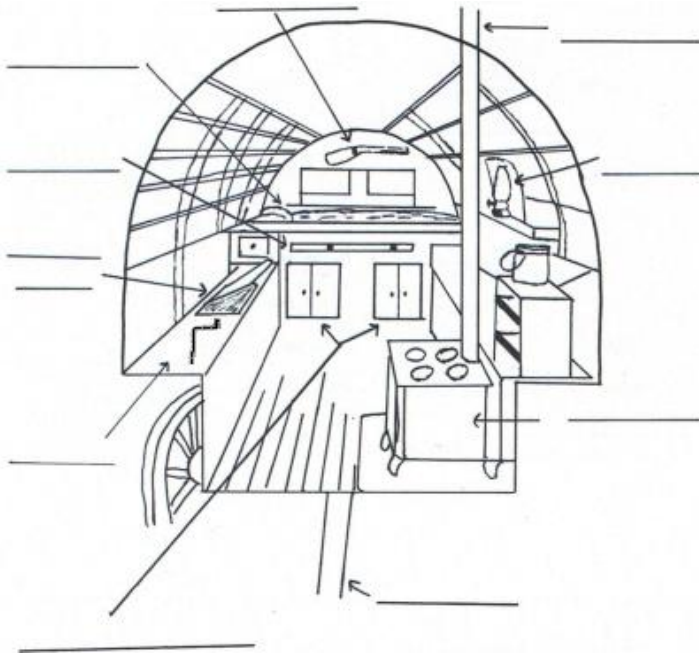


What one thing was an absolute necessity to a cowboy? _____

Roughly how many cattle died during the winter of 1886-1887? _____

Find the wagon in the museum. Label all the items on the drawing of a wagon below

Stove Pipe



Bench Lid (for storage)

Table (that pulls out)

Lantern

Rifle

Storage Space

Stove (for heating and cooking)

Bed

Tongue

Brake (to keep the wagon from rolling away)

Create your own brand in the space below



Name your brand: _____

What does your brand mean?

